

BOXER[®]



Tyre Changers

Swing and Swing 20 Pro

Recommended for service stations and garages with low to medium tyre service volume

Swing:

- The mounting arm swings to the side so that the machine can be installed in a space-saving way directly near a wall.
- The bead breaker is provided with a large anti-skid rubber pad to preserve tyres and rims. Furthermore the machine is equipped with a double-acting bead breaking cylinder to ensure tyres and rims remain undamaged.
- Alloy rims are handled particularly gently as the mounting head is provided with plastic protectors. The one-part mounting head can be adjusted vertically and horizontally in spaced-apart position relative to the rim.
- The self-centring four-jaw turntable controlled by two clamping cylinders ensures that the rim is always correctly clamped.
- Includes oiler, water separator and manual tyre inflator

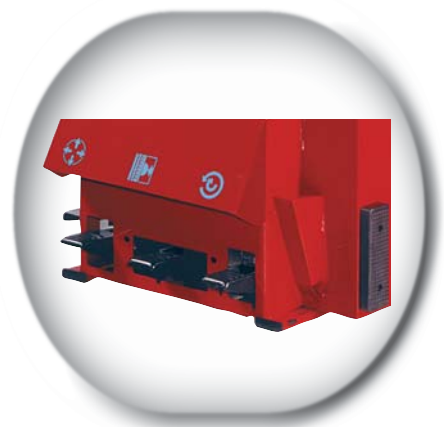
Additional features of Swing 20 Pro:

- With the outer clamping range of up to 20" the Swing 20 Pro is designed to handle larger wheels as well.
- This tyre changer is also available as Swing 24 Pro with an outer clamping range of 24" .



Self-centring turntable with two clamping cylinders (plastic protectors are optional extras).

Quick and correct operation owing to the ergonomic arrangement of the pedals.



A22-20 and A22-24 racing plus

Recommended for garages and tyre shops with medium tyre service volume

A22-20

- The machine is equipped with a double-acting bead breaking cylinder and an oversize bead breaker blade to prevent damage to tyres and rims.
- Alloy rims are handled particularly gently as the mounting head is provided with plastic protectors. The one-part mounting head can be adjusted vertically and horizontally in spaced-apart position relative to the rim.
- The pneumatic tilt-back post and the four ergonomic pedals add much to user-friendly operation.
- Accurate and quick operation is guaranteed by the self-centring four-jaw turntable controlled by two clamping cylinders and the pneumatically locked post.

Additional features of A22-24 racing plus:

- Certified by wdk
- With pneumatic mounting tool MH 320 pro and plus kit (standard equipment) for handling of UHP and run-flat tyre systems (additional optional adaptors required for PAX and CSR tyres).
- Also available as A22-24 racing without MH 320 pro and plus kit (not certified).
- Outer clamping range of up to 24" for wheels of large diameter
- The pedal-controlled two-speed turntable (3-ph versions only) and the horizontal arm supported on rollers make tyre service even quicker.
- With the pedal-controlled inflation system the tyres are inflated quickly and safely.



The plus kit is included in delivery of all wdk certified tyre changers.

The sliding jaws allow clamping of wheels of 10" – 24" diameter (A22-24 racing plus).



Super LX 24" plus

Recommended for garages and tyre shops with medium to high tyre service volume



- Certified by wdk
- With pneumatic mounting tool MH 320 pro and plus kit (standard equipment) for handling of UHP and run-flat tyre systems (additional optional adaptors required for PAX and CSR tyres).
- Also available as Super LX 24" without MH 320 pro and plus kit (not certified).
- The machine is equipped with a double-acting bead breaking cylinder and an oversize bead breaker blade which prevent damage to rim and tyre. Moreover the bead breaker arm is infinitely adjustable.
- Alloy rims are handled particularly gently as the mounting head and the clamping jaws are provided with plastic protectors. The one-part mounting head can be adjusted vertically and horizontally in spaced-apart position relative to the rim.
- The pneumatic tilt-back post and the four ergonomic pedals stand for user-friendly operation.
- Accurate and quick operation is guaranteed owing to the self-centring four-jaw turntable controlled by two clamping cylinders and the pneumatically locked post.
- The pedal-controlled two-speed turntable (3-ph versions only) and the horizontal arm supported on rollers make tyre service even quicker.
- With the pedal-controlled inflation system the tyres are inflated quickly and safely.
- Outer clamping range of up to 24" for wheels of large diameter.
- Practical tool box for tools and valves, including integrated pressure gauge.



Tyres up to 15" wide can be handled owing to the long machine post.

Super LX 26" plus

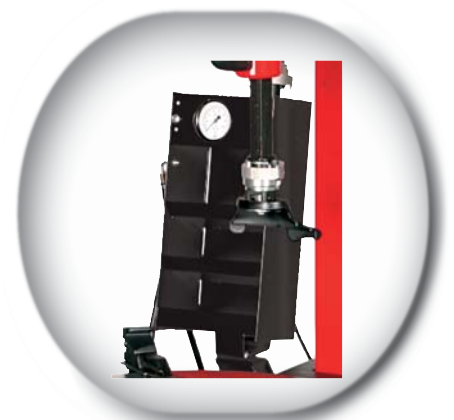
Recommended for garages and tyre shops with high tyre service volume, mostly handling large and wide tyres



- Certified by wtk
- With pneumatic mounting tool MH 320 pro and plus kit (standard equipment) for handling of UHP and run-flat tyre systems (additional optional adaptors required for PAX and CSR tyres).
- Also available as Super LX 26" without plus kit (not certified).
- All conventional tyres available in the market can be handled quickly and easily.
- Owing to the large outer clamping range – up to 26" – (up to 30" with optional clamping jaws) the machine is perfectly suited to handle very large wheels.
- The machine is equipped with a double-acting bead breaking cylinder and an oversize bead breaker blade which prevent damage to rim and tyre. Moreover the bead breaker arm can be preset to two positions.
- Alloy rims are handled particularly gently as the mounting head and the clamping jaws are provided with plastic protectors. The one-part mounting head can be adjusted vertically and horizontally in spaced-apart position relative to the rim; approach to the rim flange is accomplished pneumatically.
- The pneumatic tilt-back post and the four ergonomic pedals stand for user-friendly operation.
- Accurate and quick operation is guaranteed owing to the self-centring four-jaw turntable controlled by two clamping cylinders and the pneumatically locked post.
- The pedal-controlled two-speed turntable (3-ph versions only) and the roller-supported horizontal arm speed up operation even more.
- Pedal-controlled quick-inflating device for quick and safe tyre inflation.
- Practical tool box for tools and valves, including an integrated pressure gauge.



The practical tool box offers tools and valves within easy reach of the operator.



Pneumatic mounting tool MH 320 pro

The practical pneumatic mounting tool is an indispensable accessory for mounting and demounting tyres which are difficult to handle, such as low profile tyres and run flat tyre systems. It is an optimum complement to a tyre changer.

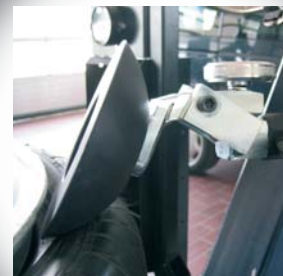
The pneumatic mounting tool is extremely rugged and specially suited for hard tyres owing to its strong cylinder.

- Bead breaking with the optional bead breaker disc is done dynamically during rotation of the turntable, thus preserving rim and tyre.
- The tyre bead is pressed into the drop centre of the rim by means of a roller so that the mounting head can be positioned on the rim both easily and gently.
- During the demounting operation the bead pusher presses the upper bead into the drop centre of the rim so that it can be easily levered over the mounting head nose and finally demounted without any effort.
- During the mounting operation of the upper bead the roller retains the bead under the mounting head nose. The practical bead pusher follows rotation of the wheel, doing the otherwise tedious job of the operator, while preserving both tyre and rim.
- The pneumatic mounting tool is an optional extra for tyre changers A22-20, A22-24 racing and Super LX 24" and can be easily fitted by the customer. It is a standard feature of Super LX 26" and all plus tyre changers.



Gentle demounting with the bead pusher

The plastic bead breaker disc is a useful accessory to prevent any damage to the rim



Accessories

Optional extras



4028228



4028229



4024784



4027646



Moto
4029337



4003444



4024078



26582



4026853
(Standard on plus
tyre changers)



Moto
4008755



4029456
Swing 24 Pro, Super LX 24 plus,
A22-24 racing plus and Super LX 26 plus



4030649
Swing 20 Pro and A22-20



4026290

Technical data and standard equipment

Technical data

Model	Max. wheel diameter	Max tyre width	Inner clamping range	Outer clamping range	Compressed air supply	Power supply	Dimensions (WxDxH)	kg
Swing	1000 mm	12"	10" – 20"	10" – 18"	bar 8 – 12	230 – 415 V 3 ph, 50 – 60 Hz	790x890x1490	200
Swing 20 Pro			10" – 22"	10" – 20"			790x890x1490	173
A22-20		10" – 22"	10" – 20"	1130x1640x1880			200	
A22-24 racing plus		15"	12" – 24"	10" – 24"		415 V 3 ph, 50 – 60 Hz	1130x1640x1880	310
Super LX 24" plus	1180x1340x1640						350	
Super LX 26" plus	1200 mm						17"	14" – 28"

Standard equipment

	Swing	Swing Pro 20	A22-20	A22-24 racing plus	Super LX 24" plus	Super LX 26" plus
Tyre lever	•	•	•	•	•	•
Servicing unit with pressure relief valve and oiler	•	•	•	•	•	•
Manual inflator	•	•	•			
Pedal-controlled tyre inflator				•	•	•
Pedal-controlled tyre inflation through air ports in jaws	GT version	GT version	GT version	GT version	GT version	GT version
Plastic protection for mounting nose	•	•	•	•	•	•
Holder for tyre lubricant container	•	•	•	•	•	•
Plastic protector for clamping jaws				•	•	•
Pneumatic mounting tool				•	•	•
Two speeds				•	•	•
Plus-Kit				•	•	•